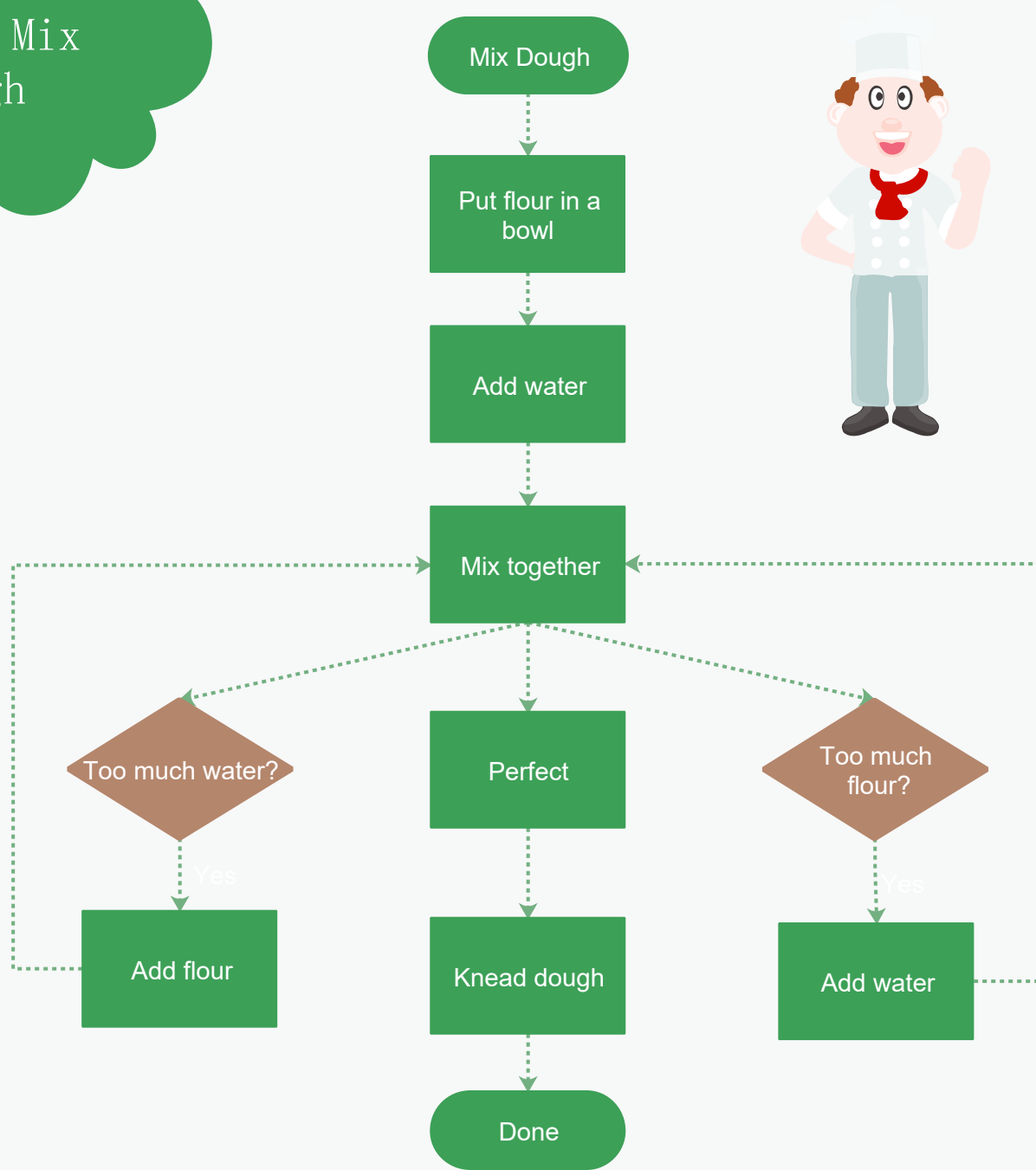


# Daily Life FLOWCHART

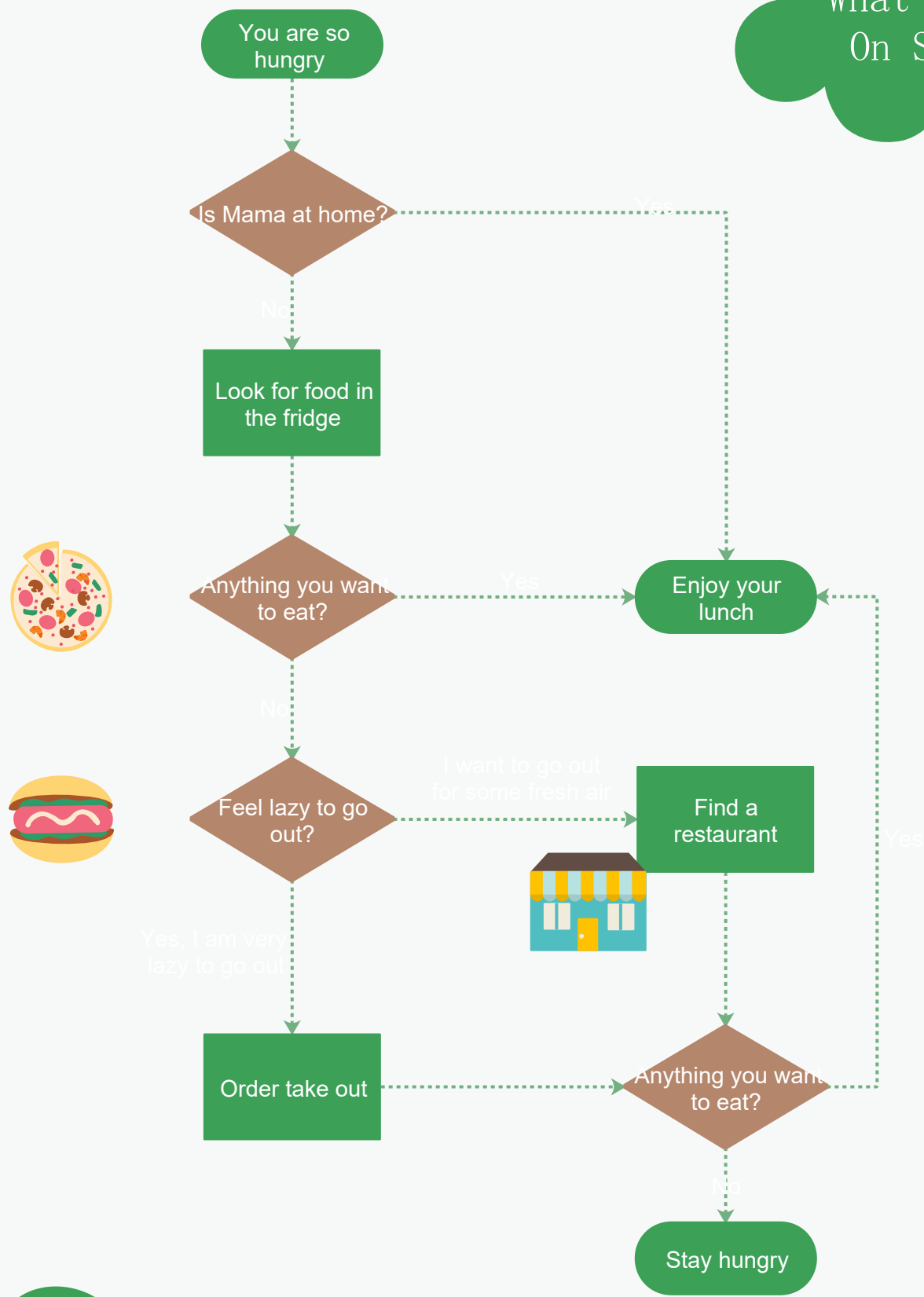


Flowchart is a visual documentation showing how steps in a process fit together. Each step in the process is represented by a certain symbol and the symbols are linked together with arrows showing the process flow direction. Flowchart is helpful in understanding, defining and analyzing a process.

## How To Mix Dough



## What to Eat On Sunday



## When to Do My Homework

